

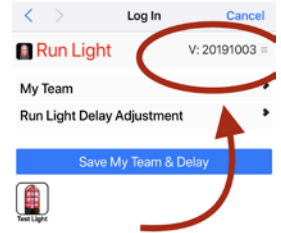
**THIS UPDATE IS FOR RED LED BASEBALL AND BASEBALL RUN LIGHTS.**  
IF YOU NEED AN UPDATE FOR A HOCKEY LIGHT PLEASE DOWNLOAD THE HOCKEY UPDATER.  
THIS UPDATE IS NOT FOR RGB COLOR CHANGING LIGHTS.

- THIS UPDATE MUST BE DONE FROM A PC.
- PLEASE READ STEPS 1 & 2 BEFORE you start the update.

This update will resolve connection issues to the configuration page and light delay issues.

The updated version should show VERSION 20191003 or higher on the upper right of your configuration page once completed. When you complete this update the light will check automatically for updates in the future and you should not have to do this step again.

If after the update you are still having trouble with your light connecting to WiFi, the horn is not pairing or any other issue please email us at [support@redgoallight.com](mailto:support@redgoallight.com)

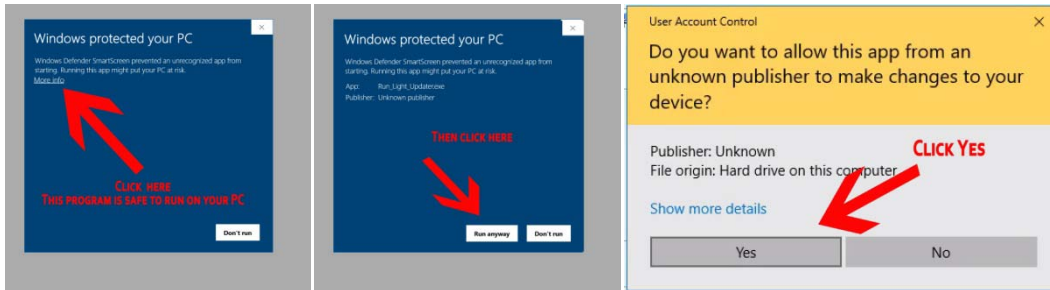


- 1.) Download the Updater from [redgoallight.com/update](http://redgoallight.com/update)  
**\*\*Make sure that you select to save the updater file to your desktop when it prompts you for a location.**

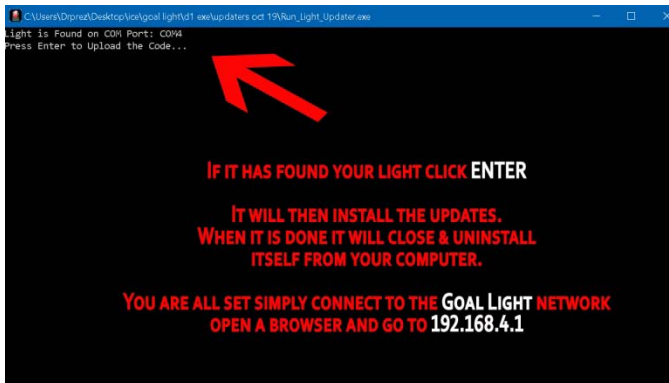
Once you download the file to your desktop, **MAKE SURE THE GOAL LIGHT IS CONNECTED TO THE USB PORT. ON YOUR COMPUTER** BEFORE YOU CLICK ON THE UPDATER!

NOTE\*\* It is important that any other devices that are connected to USB ports you disconnect them until your done with the update (except the keyboard).

- 2.) Double click on the Updater icon. It should open a window asking permission to run the program, click YES.



- 3.) It will then open a black box and if your Goal Light is connected it will say: connected to com (and a number here). If there is no number after "com" it does not see your Goal Light. You will need to close the program, plug the Goal Light into a different USB port and try again.



- 4.) It will then say "press any key". Once you press any key it will start the update which should only take about 45 seconds. It will scroll text then you will see a progress bar counting to 100.

5.) When it gets to 100, it finishes the update, closes the program and will delete the program from your computer.

You are all set now with the new working update. You can now connect to the Goal Light on your wifi networks and follow STEP 2.

## Step 2: Team Setup

**IMPORTANT:** It will take about 2 minutes for the Goal Light to reboot & restart on your network. Do not unplug the device during this time it will operate once it has restarted.

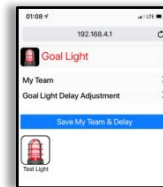
*You may have to enter your WiFi information again due to the update clearing the memory. After you enter your network information WAIT on the confirmation page for 3 minutes for it to open the configuration page. It should open it when it has completed the updates. If it does not continue with the steps below.*

- 1) After about 2 minutes you will select Goal Light once again from the network list and connect to it.
- 2) Once you are connected to the Goal Light (it will NOT take you to the steps above) open a browser and enter the ip address **192.168.4.1** to access the configuration page and team setup.

**DO NOT** put www in before the url.

*\*\*Note: You only need to do this once unless you change teams or adjust the light delay otherwise it will be saved on the Goal Light.*

- 3) From this page you can select your team from the drop down menu.

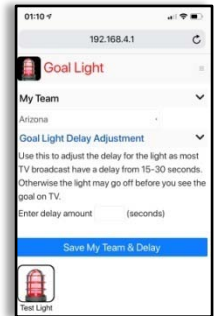


- 4) You can also add a delay for the light so that it does not go off before you see it on TV. Most broadcast have about a 10-15 second delay. If you do not want any delay enter 0 otherwise enter the time in seconds ie: 10

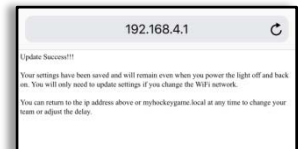
- 5) Then click "Save My Team & Delay" to store your settings.

**\*\*This page will take about 30 seconds before it changes to the confirmation page.**

During this time **DO NOT press reload, back or stop** on your browser



- 6) It will display the confirmation page once it has stored all the data and updated the Goal Light to your new settings. You can revisit 192.168.4.1 anytime to change settings. Make sure your connected to the Goal Light in your WiFi settings to access it.



**DO NOT HIT THE BACK BUTTON** use the link on the confirmation page to return to the menu.

- 7) To test the light press the test button. The light will come on for 5 seconds.

Your setup is now complete. Everything is saved in your Goal Light and will work each time you plug it in.

You will know that you have the updated version if there is a new "TEST LIGHT" button at the bottom of the page.

You should now be working 100%.

You will know that you have the updated version if there is a new "TEST LIGHT" button at the bottom of the page.

You should now be working 100%. If you have any questions or trouble please email us and we will do our best to help get you up and running.